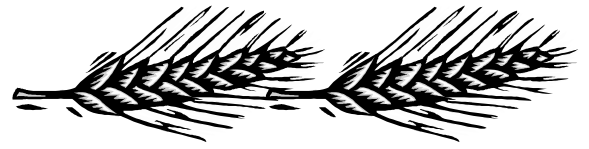
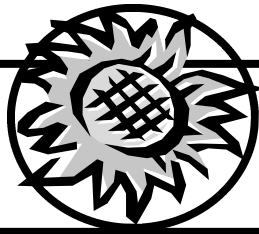


# V O T E R



Vol. 48, Issue 4—August 2007  
Website: [www.lwvofsalinaks.com](http://www.lwvofsalinaks.com)

President, Mary Anne Powell  
[wbpowell@ksu.edu](mailto:wbpowell@ksu.edu)

Editor, Ann Zimmerman  
[ann@annzimmerman.com](mailto:ann@annzimmerman.com)

## BOARD OFFICERS

President: Mary Anne Powell  
Vice President: Carla Strand  
Secretary: Ann Zimmerman  
Treasurer: Donita Michaelsen

## BOARD MEMBERS

Budget:(co-chairs):  
**Donita Michaelsen, Bill Powell**  
Finance Drive / Socials:  
**Emma Doherty**, chair  
Legislative Action:  
Mary Frances Hogg (off-board),  
chair  
Membership:  
**Margaret Wyatt**, chair  
Observers:  
Kaye Crawford (Off-board), chair  
Program/Lunch & Learn(co-ch.):  
**Jan Mendell**  
Marge Mintun (Off-board)  
Public Relations:  
**Bill Powell**, chair  
Study:  
**Sid Gray**, chair  
The Voter (co-chairs):  
**Mary Anne Powell**  
Ted Mintun (Off-board)  
**Ann Zimmerman**, editor  
Voter Service (co-chairs):  
**Janice Norlin**  
Marge Mintun (Off-board)  
Website:  
**Ann Zimmerman**, chair  
Other Board Members  
**Dina Giron**

*The League of Women Voters is a non-partisan, nonprofit organization of women and men of every age, race, background and political belief. Through more than 1200 local Leagues, state Leagues and the national organization, League members work to promote citizen action on local, state, and national issues.*

## Tri-Rivers Fair straw poll: SALINA LEAGUE PLANS ITS OWN U.S. PRESIDENTIAL PRIMARY!

Tired of living in a state with no presidential primary?

VOICE YOUR CHOICE at the Salina League of Women Voters Tri-Rivers Fair booth, Bicentennial Center, August 8-12.

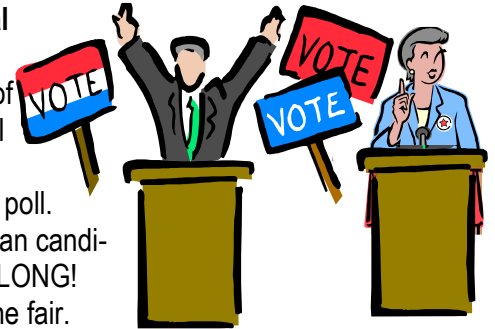
Voters of all ages are welcome in this informal poll. Ballots will include both Democratic and Republican candidates—the list of candidates in both parties is ... LONG! Results will be announced in the days following the fair.

The fair booth offers a good chance for members to participate in a League activity and meet the public to increase awareness of both the League and the voting process. Unregistered voters may complete actual voter registration forms which we then turn in to the county clerk (so they can vote later in the REAL elections).

Marge Mintun is in charge of the booth staffing schedule and would be delighted to put you on the schedule. Please contact Marge by email at [margted@aol.com](mailto:margted@aol.com) or call her at 823-9405 to join the fun at the fair. And please stop by the booth anytime during the fair.

Here are the candidate lists (in alphabetical order): REPUBLICANS: Sam Brownback, Rudy Giuliani, Mike Huckabee, Duncan Hunter, John McCain, Ron Paul, Mitt Romney, Tom Tancredo, Fred Thompson; DEMOCRATS: Joe Biden, Hillary Clinton, Christopher Dodd, John Edwards, Mike Gravel, Dennis Kucinich, Barack Obama, Bill Richardson.

Straw poll participants will have the opportunity to vote for one candidate only.



## INSIDE THIS ISSUE:

President's Report, Calendar, Website Update	PAGE 2
Membership Meeting August 27, Consolidation	PAGE 3
Immigration: Effect on Economy	PAGE 4
DC Voting Rights	PAGE 5
Lunch & Learn, Observer, League Lingo	PAGE 6
Local League Update, Money Matters	PAGE 7
Membership Form	PAGE 8

# PRESIDENT'S REPORT

## GREETINGS from your president!

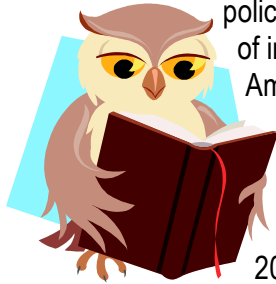
The League has received the 2006-2008 *Impact on Issues: A Guide To Public Policy Positions*. This publication from the national League of Women Voters gives the latest results of the League's long-held policy of careful study and discussion of issues. It presents LWVUS positions and achievements made between January 2004 and December 2006. Its purpose is to help League leaders and members use national League of Women Voters public policy positions effectively at the state and local levels.

Here are a few of the many topics:

### Immigration

LWVUS has launched a two-year study on immigration. This study is aimed at helping communities understand the implications of immigration at the local, state and federal level. League members and leaders will explore the underlying values and princi-

ples of immigration, reasons for immigration, current federal immigration policy, and the impact of immigration on American society.



### Internet neutrality

A statement passed at the 2006 national Convention reads: "Resolved that the League of Women Voters of the U.S. supports the concept of Internet neutrality by calling upon Congress to protect equal access to the Internet." The Net Neutrality Task Force, appointed by the LWVUS Board following the Convention, is now in the process of determining how best to implement this position statement.

### Voting Rights

DC Self-Government and Full Voting Representation: The League seeks to secure for the citizens of the District

of Columbia the rights of self-governance and full voting representation in both houses of Congress.

### Election Process

Campaign Finance Reform: With this position, the League's goal is to improve methods of financing political campaigns in order to ensure the public's right to know, combat corruption and undue influence, enable candidates to compete more equitably for public office and promote citizen participation in the political process.

This entire publication aims to promote clear thinking and wise action in government.

Borrow a copy of *Impact on Issues* from your president or secretary, or order it from LWVUS at [www.lwv.org/store](http://www.lwv.org/store) or by calling 888-287-1965 and requesting Publication #386. It should soon be accessible online as well.

—Mary Anne Powell

## CALENDAR



### AUGUST

- 8-12 Tri-Rivers Fair
- 21 Board Meeting
- 27 Membership Meeting

### SEPTEMBER

- 11 Lunch & Learn
- 18 Board Meeting
- 29 State League Day - Topeka

### OCTOBER

- 9 Lunch & Learn
- 16 Board Meeting

### NOVEMBER

- 13 Lunch & Learn
- 20 Board Meeting

### DECEMBER

No meeting – Happy Holidays!

## WEBSITE KEEPS GROWING

New information just keeps piling up at the Salina League of Women Voters website, accessible from your computer anytime you are ready to view it.

Since the last newsletter, we have added the local bylaws to the site, and in the near future we plan to update the photos and include a section on "League Lingo."

Already included there are membership information, a calendar of upcoming events, copies of newsletters old and new, a list of board members, links to local news items featuring League action, the Salina League's positions on issues (positions arrived at through past studies), contact information for some League officers, and

links to other interesting websites including local, state and national information (not just League of Women Voters sites). The links include, among many others, a site labeled "Find your legislator," where you can enter an address and determine who all the legislators are for that location.

On the opening page, you can even check the local time, Salina weather and the top news stories from the Associated Press and see a waving Kansas flag.

Ann Zimmerman is our website chair, and information for posting on the site goes to website builder Don Shorock, who makes the whole thing look good.

## MEMBERSHIP MEETING, Mon., August 27: Josh Svaty to address Kansas Energy Issues

State Representative Josh Svaty will discuss the crucial issue of energy in Kansas at the Salina League's Membership Meeting at the Library Monday, August 27, 7:00 to 8:30 p.m.

Rep. Svaty (pronounced "SWAH-tee") is a member of the House Energy and Utilities Committee. He is also a member of the Kansas Energy Council (KEC), an organization formed by the governor in 2004 and charged with development of a comprehensive state energy plan. The plan is to include information about the state's energy resources and to recommend long-term energy policy to the governor, the legis-

**PUBLIC INVITED!**

**DATE: Monday, Aug. 27**

**TIME: 7:00 to 8:30 p.m.**

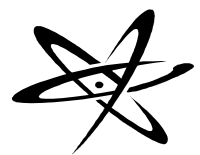
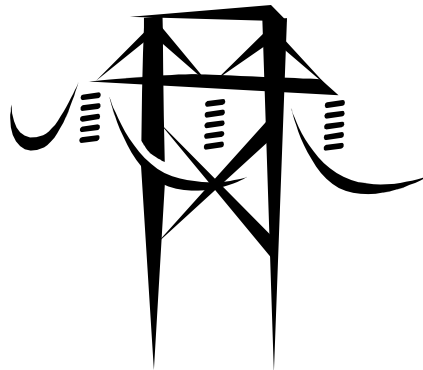
**PLACE: Salina Public Library  
Prescott Room (downstairs)**

**FREE REFRESHMENTS!**

lature, and the Kansas Corporation Commission. Svaty chairs the Goals Committee of the KEC.

Svaty is an Ellsworth farmer with a degree in history and religion from Sterling College. His other committee memberships in the legislature include the Transportation and Public Safety Budget Committee, Agriculture and Natural Resources (where he is the ranking minority member), and the Joint Committee on Administrative Rules and Regulations. Svaty is a Democrat serving his third term in the Kansas House.

The Salina League's Membership Meeting is held annually early in the school year and presents a speaker on an issue of local public interest.



## COUNTY AVOIDS THE WORD "CONSOLIDATION" BUT ENDORSES STUDY

On May 9, 2007, County Commissioners approved a proclamation agreeing to take part in a study "to review governmental services."

Only after publication of this move did League members realize this was a positive response to the Salina League's City-County Consolidation Study which recommended a joint city-county task force to study the pros and cons of consolidation. The County never mentioned the word "consolidation" in its proclamation.

League members had made several presentations to both the Salina city and Saline County commissions. In early April, the city commission passed a resolution to participate in the task force. The county had responded with apparent hostility each time the League brought up the issue.

However, League members were told by a county staff member that the commission had always planned to pass the issue—they just had not yet decided on the timing for passage.

Commissioners Craig Stephenson and Sherri Barragree voted in favor of the move. Newly elected commissioner Randy Duncan voted against, explaining that he felt he had been elected largely because of his opposition to consolidation.

The League's position was based on the proposition that a thorough study of the issue is necessary before citizens can make an informed decision on consolidation.

## MORE ON IMMIGRATION: IMPACT ON U.S. ECONOMY

*The national League of Women Voters has recently launched a two-year Immigration Study aimed at helping communities understand the implications of immigration at the local, state, and federal level. This article is from the LWVUS website.*

Historically, immigrants have come to this country for a variety of reasons, but economic opportunity has always been a major draw. And the U.S. economy has not disappointed.

It has accommodated an expanding labor supply that today includes 1.5 million immigrants per year whose spending on housing and consumer goods helps stimulate the economy and increase the demand for still more labor.

### Workforce Shortfall

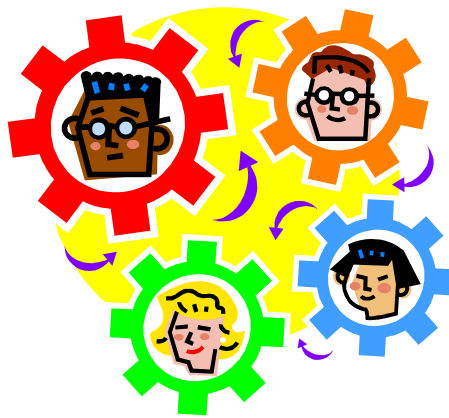
At a time when a “baby boomer” decrease is anticipated in the workforce, economists expect demand to create millions of new jobs. According to the Bureau of Labor Statistics, 56 million new jobs will be created in this country between 2002 and 2012. During this same period, more than 75 million Americans will retire, and declining native-born fertility rates will be approaching replacement level. Various interests consider new immigrants a necessary labor source to meet the shortfall created by these conditions.

### Costs and Benefits

Immigrants have had a profound impact on company creation, economic innovation and market value in the U.S. An article in *PRNewswire* (November 15, 2006) reported that over the past 15 years, immigrants founded one of every four U.S. public companies that received venture capital. Forty-seven per-

cent of current venture-backed companies in the U.S. have immigrant founders.

Nearly half of the immigrant entrepreneurs surveyed came to the U.S. as students and started their own businesses within 12 years of entering the country. According to a Migration Policy Institute publication, *Immigration and America's Future: A New Chapter*, the number of Hispanic-owned businesses has grown at three times the national average, while the number of Asian-owned businesses has grown at twice the national average.



Furthermore, the negative effect of authorized and unauthorized immigrants on public-sector budgets is small. Immigrant workers pay into social insurance programs, lessening strains on social assistance for the elderly. Many unauthorized workers use false ID numbers and pay Social Security taxes but are ineligible to receive benefits. Less than three percent of immigrants receive food stamps. Unauthorized workers support local school districts through property taxes, indirectly as renters or directly as homeowners.

Taxes paid to the federal government and increased macroeconomic

productivity result in a net benefit to the country as a whole from immigrants. However, studies indicate that costs and benefits are not evenly allocated locally. Communities face demands for costly services from immigrants, particularly in education and health care, which are not offset by tax income. But this type of financial burden is applicable to all low-income, uninsured populations—unauthorized, authorized and native-born. As Tamar Jacoby notes (*Foreign Affairs*, Nov./Dec. 2006), the additional state tax burden per native household is, on average, no more than a couple of hundred dollars a year.

### Perceived Problems

Opponents of immigration often suggest that if employers paid American workers more, they could reduce the need for foreign labor. However, many industries cannot pay more, because they would be undercut by imports from abroad. Even in sectors such as construction and hospitality, where the work must be done in the U.S., companies must decide whether it is better to lure Americans to jobs that require lower skills than those that they possess by paying more for less-skilled work. Meanwhile, because they complement rather than compete with most native-born workers (this, in turn, attracts additional capital), immigrant workers are a factor in raising rather than lowering most American wages.

For the past decade, market forces have attracted 1.5-1.8 million skilled and unskilled immigrants to work in the U.S. each year. However, annual legal quotas admitted only about a million immigrants, resulting in a significant imbalance. A realistic immigration system would make the annual legal intake more or less equal to the flow gener-

## IMMIGRATION, continued

ated by supply and demand. The U.S. currently issues 5,000 visas per year to year-round unskilled workers, while 400,000-500,000 additional such workers are needed to keep the economy growing.

### Disaster or Inconvenience

A legitimate way to assess the role and value of immigrants' contribution to America is to consider what would happen if the influx stopped or if those already here left the country. Proponents of comprehensive reform ("bring in more workers") believe this would be

disastrous. In some regions, they contend, whole sectors of the economy could collapse. Opponents maintain that a cut-off would mean, at most, a temporary inconvenience for a few employers, who would soon wean themselves away from their dependence on foreign workers.

Whichever path is chosen, there is one certainty: the consequences will affect everyone.

*This article is based on two LWVUS Immigration Study Committee background papers, "Immigration and the Economy" by*

*Chris Carson and "Economic Aspects of Authorized and Unauthorized Immigration" by Dorrit Marks. These papers, including full citations of sources, are available at [www.lwv.org](http://www.lwv.org).*



## National League President Testifies: D.C. House Voting Rights Act of 2007

**To live in our nation's capitol is to give up the right to a voting representative in the U.S. Congress. The national League of Women Voters takes a stand in favor of voting rights for DC citizens. Here is the July 18, 2007, testimony of LWVUS president, Mary G. Wilson:**

To: Members of the U.S. Senate:

The League of Women Voters asks that you support Senate Bill 1257, the District of Columbia House Voting Rights Act of 2007, recently introduced by Senators Lieberman and Hatch. American citizens living in our nation's capital are treated uniquely – required to pay federal taxes but provided no voting representation in Congress. We strongly urge you to correct this injustice and vote for S. 1257 and oppose any attempts to weaken or filibuster this legislation.

S. 1257 provides voting representation in the House of Representatives for D.C. citizens by expanding the size

of the House to 437 members, with the state of Utah gaining the other additional seat until reapportionment after 2010. This approach provides voting rights for District citizens without upsetting the partisan balance of the House. It also addresses the concern that Utah was not treated fairly in the 2000 reapportionment process.



S. 1257 applies only to representation in the House of Representatives and does not affect the composition of the Senate. On April 19, the House passed comparable legislation. Late

last year, the Utah legislature took extraordinary action in adopting a redistricting plan to accommodate and facilitate the federal legislation.

Over the last 200 years, the principle that all citizens are entitled to a vote in their national government has emerged as a cornerstone of American democracy and a fundamental tenet of our Constitution. Although relatively few Americans were entitled to vote in the early days of the Republic, virtually all restrictions on the franchise have since been eliminated, including those based on race, sex, wealth, property ownership and marital status. Americans living in the nation's capital deserve to have voting representation in the body that makes their laws, taxes them and can call them to war.

Americans have espoused and fought for democracy across the globe. We ask that you join that fight by supporting the D.C. House Voting Rights Act of 2007.

## September "Lunch & Learn" presents KANSAS LEGAL SERVICES

On **Tuesday, September 11**, the Salina League begins its fall Lunch and Learn series with a panel of attorneys from Kansas Legal Services (KLS) at the public library's Prescott Room.

Beginning at **12:15pm**, Rebekah Gaston, attorney in the local KLS office, and Kerry Wassinger, Salina's managing attorney with an office in Hays, will discuss the services and projects available in Salina

KLS is a non-governmental not-for-profit law firm that receives funding through grants and contracts to provide legal assistance to low income and other Kansans.

Lunch and Learn is scheduled on the second Tuesday of the month during September, October, November, January, February and March.

## OBSERVER REPORT: Salina Airport Authority

### Board Summary, July 25, 2007

The Salina Airport Authority board renewed a lease with the Kansas National Guard for a building that has been used by the Guard since the 1980s.

Building No. 219, located at 3010 Arnold Avenue, is a two-story office building that the Guard has been using as a classroom facility and as part of the Regional Training Institute.

The renewed lease replaces the 1986 lease agreement and adds a 29,113-square-foot tract of land that is adjacent to the Guard's Army Aviation Support Facility for additional equipment storage.

David Arteberry with George K. Baum and Company attended the meeting to review the structure of the temporary financial notes that will be used for the construction of Hangar 600. The Airport Authority staff is focusing on a three-year term for the notes. Note sales will be considered until noon on Wednesday, August 15, 2007. The August board meeting will take place at 1:30 p.m. on August 15.

The Navy T-45 activity accounted for an increase in airport operations during June. The June 2007 operations at 6,788

were 5.8% higher than the June 2006 count of 6,411. The year-to-date operations are up 9.86%.

The Navy T-45 activity also had a very positive impact on fuel flowage totals. During the month of June, 433,448 gallons of fuel were delivered. This is a 51% increase over the June 2006 total of 286,903 gallons. The year-to-date total fuel flowage (1,988,927 gallons) is up over 14% as compared to the first six months of 2006 (1,738,473 gallons). The Airport Authority is on pace to again exceed the 4 million gallon level.

Area travelers have responded well to the new flight schedule. The new flight schedule coupled with lower fares on both US Airways and Midwest Airlines have benefited area passengers. For the month of June 2007, 226 people boarded Mesa/Air Midwest flights. The current schedule of non-stop flights has the potential of 450 enplanements per month. If the numbers continue to see an increase, the Airport Authority will work with Mesa on adding a mid-day flight.

—Report provided by  
Observer Bill Powell

## LEAGUE LINGO

*Welcome to the League of Women Voters' world of special language! Sometimes new (and not so new) members are confused by the abbreviations and terminology used by the League. In this few issues, we will give you a list of definitions (in alphabetical order) designed to put you "in the know" with League terms.*

**ACTION:** Expression of League positions to government officials, the media and the public by authorized League leaders and members.

**ACTION ALERT:** Request from state or national League to take action based on a League position.

**ADVOCACY:** Lobbying, litigation, monitoring, public education, media campaigns and other techniques used to achieve change.

**ADVOCACY AGENDA:** Priorities for action on issues to be targeted during a

specific time frame.

**ANNUAL MEETING:** Local year-end business meeting to elect officers, adopt a budget, and vote on bylaws changes and program.

**ASSOCIATE MEMBER:** Non-voting member such as a U.S. citizen under 18 years of age or a non-citizen.

**CONCURRENCE:** Agreement by League members with program positions reached by another League or agreement with a position statement developed by a committee following study and discussion of a particular subject.

**CONSENSUS:** Collective opinion of a substantial number of League members after study and discussion of a particular subject.

**CONVENTION:** State and national League meetings held biennially to elect officers for the biennium, adopt program, make bylaw changes, and adopt a one-year

budget.

**COUNCIL:** State and national League meetings held in the years between conventions to adopt a budget, and do other business as necessary. Local Leagues send delegates to state council, state Leagues to national council.

**EDUCATION FUND:** The tax-deductible arm of national, state and large local Leagues, handling funds to be used for educational purposes, not for action on issues.

**F & I:** Acronym for Facts and Issues, which are publications with information on program studies.

**HOUSEHOLD MEMBERS:** Refers to households with two or more members. Per-member-payments (PMP) for each member beyond one is assessed at one-half rate. Local dues may vary.

More *LINGO* in your next VOTER issue.

## SALINA LEAGUE UPDATES

### Complimentary Copies of VOTER:

In recent years, the Salina League has mailed the VOTER newsletter to many non-members, including community and governmental leaders and other individuals who might be interested in League activities.

With increases in the costs of printing and mailing, the board decided to limit the extra issues sent.

Some non-members now have a colorful sticker on their copy of the VOTER. The sticker asks the recipient to contact the League if they wish to continue receiving the VOTER.

The League does not wish to deny the VOTER information to anyone, but

the goal is to prevent copies from going to people who are not at all interested in receiving them.

If your VOTER has a sticker, please contact Mary Anne Powell at [wbpowell@ksu.edu](mailto:wbpowell@ksu.edu) or 823-8041 to continue receiving VOTERS.

### New Membership Rates

An increase in membership rates was approved by the membership at the Annual Meeting in April. Please see the back cover of this VOTER for the new rates. Rates were raised because the previous rates were insufficient to cover state and national per member payments and left nothing for local projects.

### Looking Ahead to Program Planning Meeting

Each year, the Salina League is to meet in January to decide what local issues need study or revision through the League's careful study process. Please consider what local issues could use a League study.

### Looking for Observers and Observer Chair

The search is still on for a successor to Observer Chair Kaye Crawford. If interested, you can check with Kaye, Salina's director of Human Relations, to find out how to do the job. A few local boards and organizations still need a member to serve as their observer.

## MONEY MATTERS: How can the LWV Education Fund be used?

**Salina League treasurer Donita Michaelsen wants members to be aware of the great value and service provided by the League's EDUCATION FUND.**

**The EDUCATION FUND only receives money specifically designated for that Fund, yet some of the most important local League activities are funded by it.**

**The EDUCATION FUND supports Salina's candidate forums, the fair booth, the Voter's Guide and other informational and educational projects.**

**Please give generously to the local EDUCATION FUND—your contributions are tax deductible.**

*Here is the scoop from LWVUS regarding the EDUCATION FUND, beginning with information about donations that are NOT tax deductible.*

The national League of Women Voters U.S. and its local Leagues are

recognized by the IRS as 501 (c)4 organizations. Dues and contributions to them are not tax deductible for the donor. The LWV carries out lobbying and membership activities at the national, state and local levels.

On the other hand, the League of Women Voter Education Fund (LWVEF) is a 501(c)3 organization. Contributions to the LWVEF are tax deductible for the donor. Its primary activities are educational in nature: information for voters, public forums, international outreach, etc. LWVEF carries out national League projects funded internally, carries out national League projects funded through foundation grants (sometimes with pass-through grants for local and state Leagues), and sponsors a "grant service" program for state and local Leagues.

The grant service program works like this: Local Leagues raise education funds and send the funds to LWVEF, which retains them in an earmarked account. The local League's

money is then used as requested by the local League on projects deemed appropriate for Education Fund money—that is, projects that involve no lobbying or other prohibited activities. LWVEF provides these money management services free of charge.

Common LWVEF-approved activities include educational forums, voter service activities, and payment of a portion of a local League's national membership dues (called the Per Member Payment or PMP).

Certain combinations of activities may need to be funded by a combination of LWVEF and non-education funds. For example, at a League-sponsored educational forum, League members may invite new members to join, but LWVEF funds may *not* be used to pay for the membership brochures which are distributed at the event.

As another example, a Voter's Guide paid for with LWVEF funds may only promote membership if separate funds pay for the page with membership information.

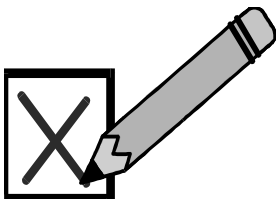
## League of Women Voters of Salina

PO Box 502

Salina, KS 67402-0502

www.lwvofsalinaks.com

## JOIN US



**JOIN IN THE ACTION:** Become a member of the League of Women Voters of Salina or renew your League Membership. There is no better time than NOW for you to join the League. Please take a moment now to become a member.

\_\_\_\_\_ Yes, I want to add my voice to yours by joining the League at the following level:

- \_\_\_\_\_ Single Membership (circle one)
- |                           |         |
|---------------------------|---------|
| <i>Contributing Level</i> | \$55.00 |
| <i>Sustaining Level</i>   | \$45.00 |
- \_\_\_\_\_ Family Membership (circle one)
- |                           |         |
|---------------------------|---------|
| <i>Contributing Level</i> | \$80.00 |
| <i>Sustaining Level</i>   | \$65.00 |
- \_\_\_\_\_ Student/supported or other      \$20.00

\_\_\_\_\_ I am unable to join the League at this time, but enclosed is my contribution of \$\_\_\_\_\_.

For more information, please contact:

**Margaret Wyatt, Membership Chairperson**  
4401 W. State Street Road, Salina, Kansas 67401  
Telephone: 823-2806 Email: gretchenskiski@aol.com

Make checks payable to: **The League of Women Voters of Salina**, and mail to **PO Box 502, Salina, KS 67402-0502**.